

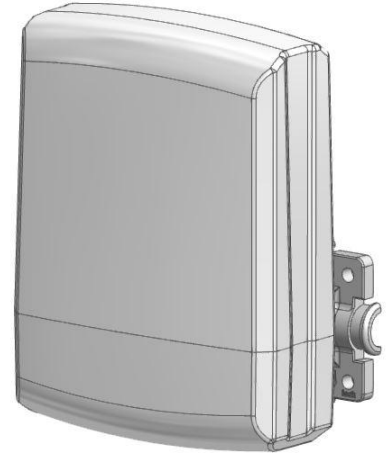
Multi-Band Patch Antenna

819 ~ 960, 1710~2690 MHz / 5 dBi, 6dBi


CPWW-CPB-56

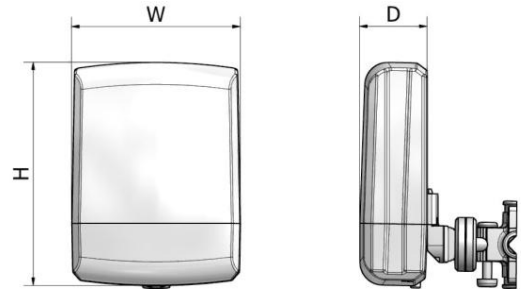
i. Electrical Specification

Frequency Range (MHz)	819 ~ 960	1710 ~ 2690
Polarization	Vertical	Vertical
Band Width	141 MHz	980 MHz
Gain	≥ 5 dBi	≥ 6 dBi
Beam width	Horizontal	60 ~ 130°
	Vertical	50 ~ 110°
F-B ratio	7dB @ -180 ± 30°	10dB @ -180 ± 30°
VSWR	1 : 1.8	1 : 1.6
Impedance	50 Ω	
IMD (3rd)	≤ -140 dBc @ 2x37dBm	
IMD (5th)	≤ -160 dBc @ 2x37dBm	
Maximum input power	≤ 10 W	

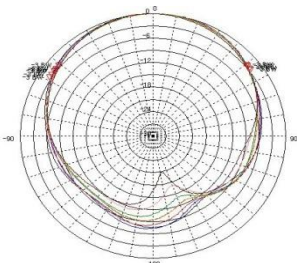


ii. Mechanical Specification

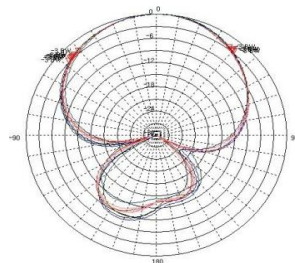
Radom Dimension (HxWxD)	145 x 111 x 45 mm
Weight (Exclude bracket)	≤ 0.4 kg
Connector Type	N-J (Female)
Withstand Wind Pressure	30 m/sec
Radiator Material	AL
Radome Material	ASA
Radome Color	 Cool Gray 1C Cool Gray 4C
Mechanical Down Tilt	Up, Down ± 30°
	Left, Right ± 30°
Temperature	-40 °C ~ 70 °C
Packing Size (H x W x D)	-
Packing Weight	-



iii. Radiation Pattern

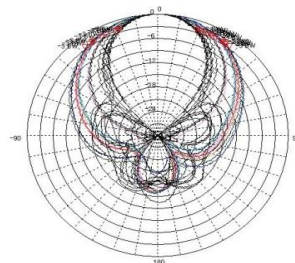


Horizontal Pattern

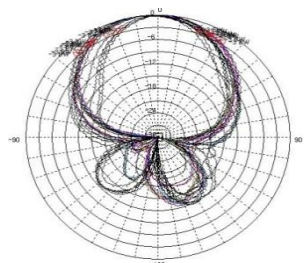


Vertical Pattern

Low Band



Horizontal Pattern



Vertical Pattern

High Band